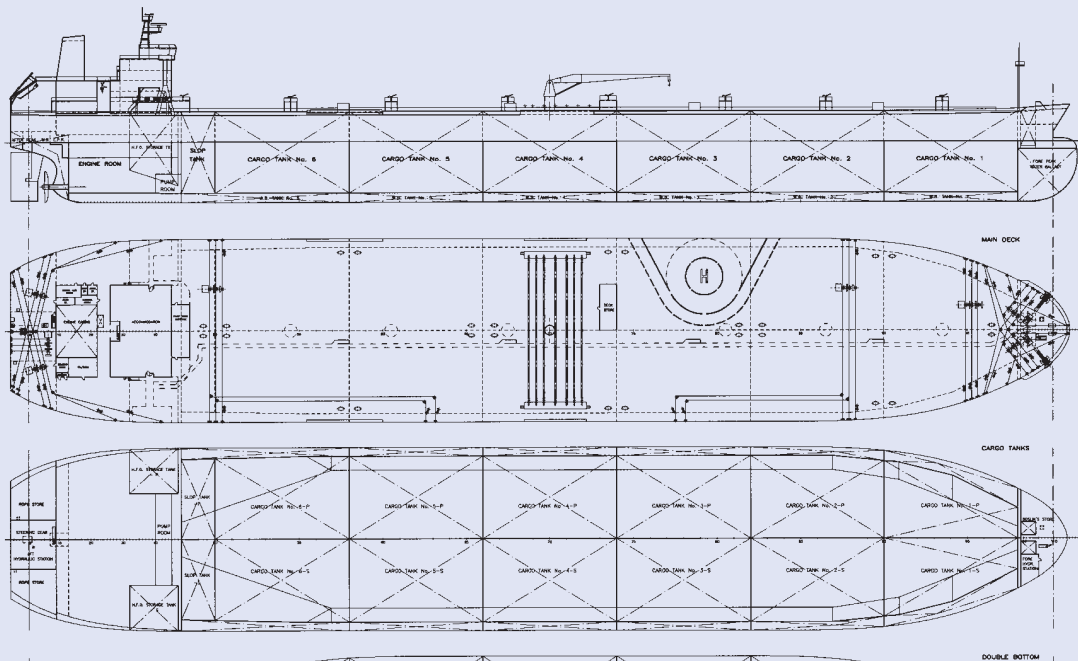


Suezmax Oil Tanker

166,300 DWT



Builder / Yard No.: **Shipyard BRODOSPLIT / 433, 434, 447**
 Name: **ALAN, HRVATSKA, DONAT**
 Owner / Flag: Aenona Maritime Ltd / Malta
 Designed by: Shipyard Brodosplit
 Delivered: 2003, 2004, 2007

Single screw diesel engine driven Oil Tanker with longitudinal bulkhead, bulbous bow, and transom stern. Living quarters including navigation bridge, engine room with fuel oil tanks on both sides and pump room located aft. Double bottom / double side tanks and peak tanks intended for segregated ballast. Cargo space divided into twelve (12) cargo and two (2) slop tanks. Hull structure made of mild and higher tensile steel. Three (3) grades of cargo can be handled simultaneously.

Classification: Bureau Veritas 1 ⚡ HULL ⚡ MACH
 ⚡ OIL TANKER, ESP UNRESTRICTED
 NAVIGATION, SYS-NEQ-1
 ⚡ VERISTAR -HULL, ⚡ AUT -UMS, SPM,
 IN WATER SURVEY, VCS ⚡ CARGO
 CONTROL, ⚡ NMON -SHAFT

Main dimensions

Lenght over all	281.20 m
Length between perpendiculars	270.00 m
Breadth moulded	48.20 m
Depth moulded	23.00 m
Design draught	16.00 m
Scantling draught	17.10 m
Deadweight at design draught	152,852 t
Deadweight at scantling draught	166,447 t
Main engine Split-MAN-B&W	6S70MC-C
Selected maximum continuous rating	16,780 kW/82 rpm
Trial speed at design draught and 85% SMCR	15.5+5 kn
Main engine daily fuel oil consumption	56.7 t/day
Cruising range	23,000 nm
Crew complement	32

Capacities (100%)

Cargo and slop tanks	185,447 m ³
Ballast tanks	52,313 m ³
Heavy fuel oil	4,025 m ³
Diesel	130 m ³
Fresh and feed water	410 m ³

Painting

Cargo tanks & Slop	HEMPADUR 4515
Under water hull and boot topping	
Coal tar epoxy + vinyl	HEMPADUR COMBIC 7199, TIN FREE self polishing antifouling

Cargo equipment

Cargo pumps	3 x 3,500 m ³ /h at 140 mWC, s.g. 1.0, 1 cSt centrifugal pumps, steam turbine driven
Cargo stripping	1 x 250 m ³ /h at 140 mWC, s.g. 1.0, 1 cSt KPF 275 steam driven 2 x 406 m ³ /h at 30 mWC, s.g. 1.0, 1 cSt stripping eductor
Cargo manifolds	3 x 500 mm

Auxiliary engines plant

Main diesel-generator sets	3 x 912 kW
Emergency diesel-generator set	1 x 248 kW

Heating plant

Auxiliary oil fired boilers	2 x 35 t/h saturated steam at 18 bar G
Composite boiler	1 x 1.8+1.5 t/h saturated steam at 7 bar G