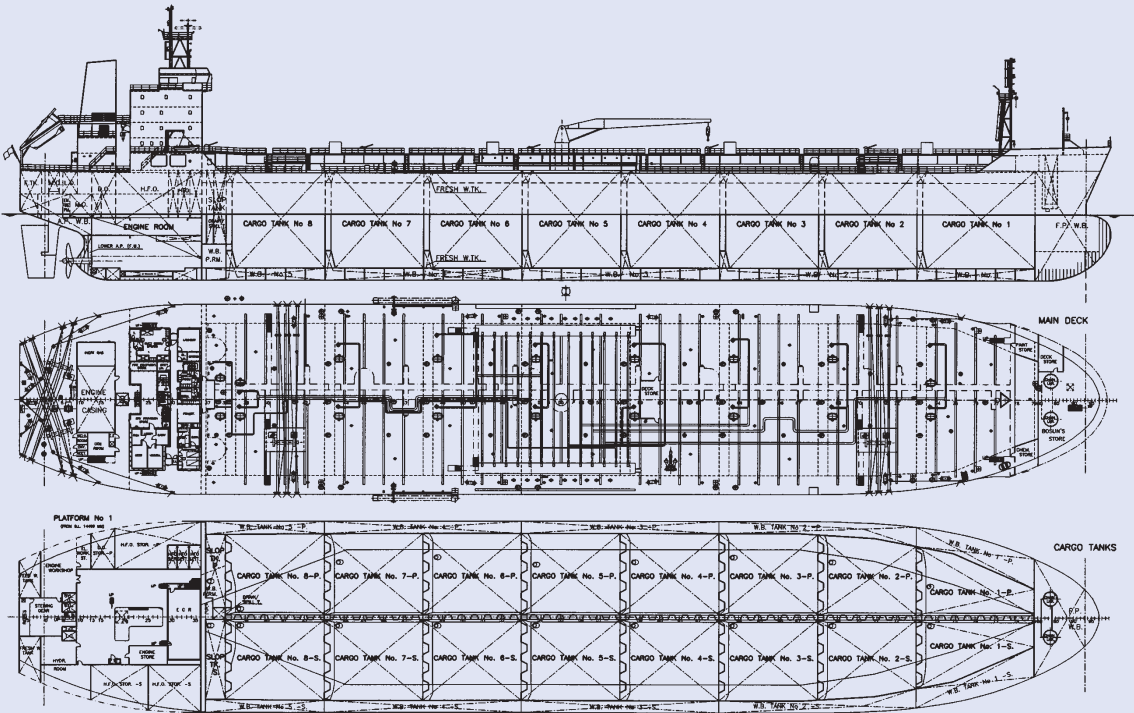


# Oil Product / Chemical Tanker

45,000 DWT



Builder / Yard No.: Shipyard BRODOSPLIT / 428  
 Name: m/s ELKA GLORY  
 Owner / Flag: Carriage Shipping Inc. / Monrovia  
 Sister vessels: 415, 416, 417, 427, 432  
 Designed by: Shipyard Brodosplit  
 Delivered: 2001-2005

Single screw diesel engine driven Oil Product / Chemical Tanker with longitudinal bulkhead, bulbous bow, and transom stern. Living quarters including navigation bridge, engine room with fuel oil tanks on both sides and pump room located aft. Double bottom / double side tanks and peak tanks intended for segregated ballast. Cargo space divided into sixteen (16) cargo and two (2) slop tanks. Hull structure made of mild steel. Eight (8) grades of cargo can be handled simultaneously.

Classification: ABS, ⚡ 1A1(E) Oil and Chemical Carrier, ⚡ ACCU, ⚡ AMS, SH, VEC, ESP, UWILD, IMO Type 3

#### Main dimensions

Lenght over all	183.40 m
Length between perpendiculars	175.00 m
Breadth moulded	32.00 m
Depth moulded	17.95 m
Design draught	11.00 m
Scantling draught	12.00 m
Deadweight at design draught	39,491 t
Deadweight at summer draught	44,598 t
Main engine Split-MAN-B&W	6S50MC-C
Selected maximum continuous rating	9,180 kW/123 rpm
Trial speed at design draught and 90% SMCR	15.65 kn
Main engine daily fuel oil consumption	33.6 t/day
Cruising range	20,000 nm
Crew complement	27

#### Capacities (100%)

Cargo and slop tanks	55,423 m <sup>3</sup>
Ballast tanks	21,197 m <sup>3</sup>
Heavy fuel oil	1,952 m <sup>3</sup>
Diesel	143 m <sup>3</sup>
Fresh and feed water	240 m <sup>3</sup>

#### Painting

Cargo tanks and slop tanks Sigma Phenguard  
 Under water hull and boot topping Epoxy + Tie coat + SPC  
 (250 my + 75 my + 450 my)  
 Open deck and exposed superstructure  
 Epoxy +Polyurethane (260 my + 60 my)

#### Cargo equipment

Cargo pumps	16 x 580 m <sup>3</sup> /h at 120 mLC, s.g. 0.8, 1 cSt submerged, centrifugal, hydraulic motor driven cargo tanks pumps
	2 x 120 m <sup>3</sup> /h at 130 mLC, s.g. 0.8, 1 cSt submerged, centrifugal, hydraulic motor driven slop tanks pumps
	1 x 150 m <sup>3</sup> /h at 70 mLC, s.g. 0.8, 1 cSt submersible, centrifugal, hydraulic motor driven portable cargo pump
Cargo manifolds	8 x 300 mm

#### Auxiliary engines plant

Main diesel-generator sets	2 x 990 kW
	2 x 740 kW
Emergency diesel-generator set	1 x 170 kW

#### Heating plant

Auxiliary oil fired boilers 1 x 16 t/h saturated steam at 7 bar G  
 Donkey boiler 1 x 1.5 t/h saturated steam at 7 bar G  
 Exhaust gas economiser 1 x 1.4 t/h saturated steam at 7 bar G