

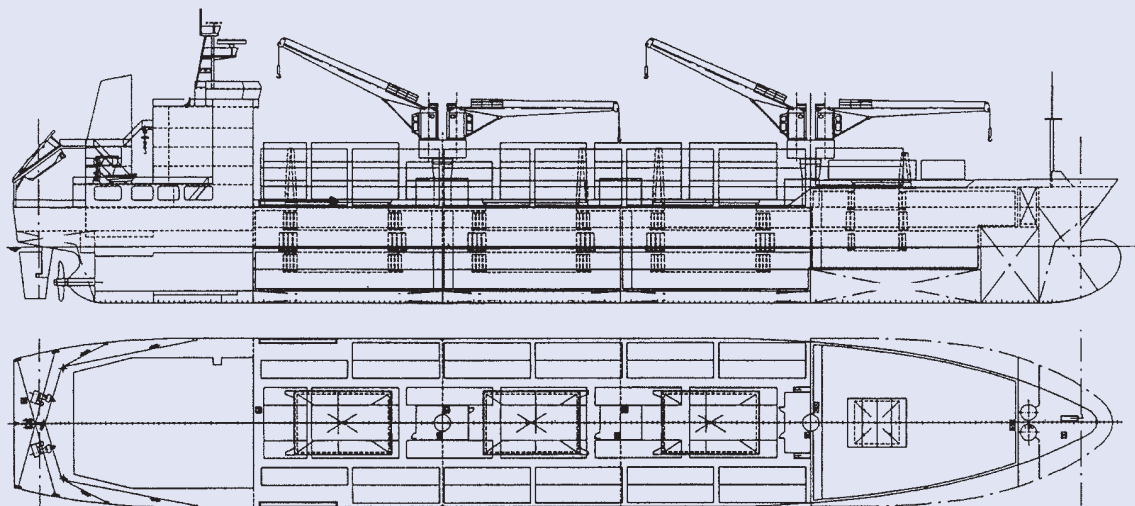
Containers & Reefers

CONTAINER



Reefer / Container Ship

600,000 CU.FT



Builder / Yard No.: **Shipyards BRODOSPLIT / 404**
 Name: m/s **LADY KORČULA**
 Owner / Flag: Lady Navigation Inc. / Liberia
 Sister vessel: 403
 Delivered: 2002

Single screw diesel engine driven Reefer / Container Vessel with bulbous bow, transom stern and long forecastle. Living quarters including navigation bridge and engine room located aft. Double bottom / double side tanks and peak tanks intended for segregated ballast. Cargo space divided into four (4) holds and eight (8) refrigerating compartments with separate air cooling. Structural steel and profiles made of mild steel.

Intended cargoes: frozen meat, fruit include banana, palletised cargo, containers.

Classification: LR; ⚡ 100 A1, ⚡ LMC, UMS, ⚡ RMC, (CA), LI, SCM

Length over all	155.25 m
Length btw perp	146.00 m
Breadth moulded	23.40 m
Depth moulded	13.20 m
Draught design	7.80 m
Draught scantling	9.50 m
Deadweight at design draught	8,500 t
Deadweight at scant. draught	12,800 t
Main engine:	BRODOSPLIT -MAN-B&W 7L60MC
SMCR	13,440 kW / 123 rpm
Trial speed at 90% SMCR, on design draught	21.6 knots
Reefer plugs	88 pcs.

Capacities

Cargo holds, bale	16,713 m ³
Segregated ballast tanks	2,407 m ³

Provisions

Heavy fuel oil	1,657 m ³
Diesel fuel oil	122 m ³
Fresh water	170 m ³

Main engine consumption:	49.9 t/day
Cruising range	16,000 nm
Crew complement	25

Painting

- Cargo holds - Bitumenous
- Water ballast tanks - Coal tar epoxy
- Under water hull - Coal tar epoxy + SPC
- Deck and exposed superstr. - epoxy

Cargo equipment

- Cargo hatch No. 1 6.16 x 6.30 m
- Cargo hatch Nos. 2-4 12.82 x 8.00 m
- Cargo gears 2 x twin 20 t
- Cargo holds: 16 compartments, 8 independent cooling zones.
- Al-gratings on tanks top and all decks.
- Refrig. Plant: R22 indirect expansion system at primary refrigerant and brine (CaCl₂) as secondary fluid.

Auxiliary engines plant

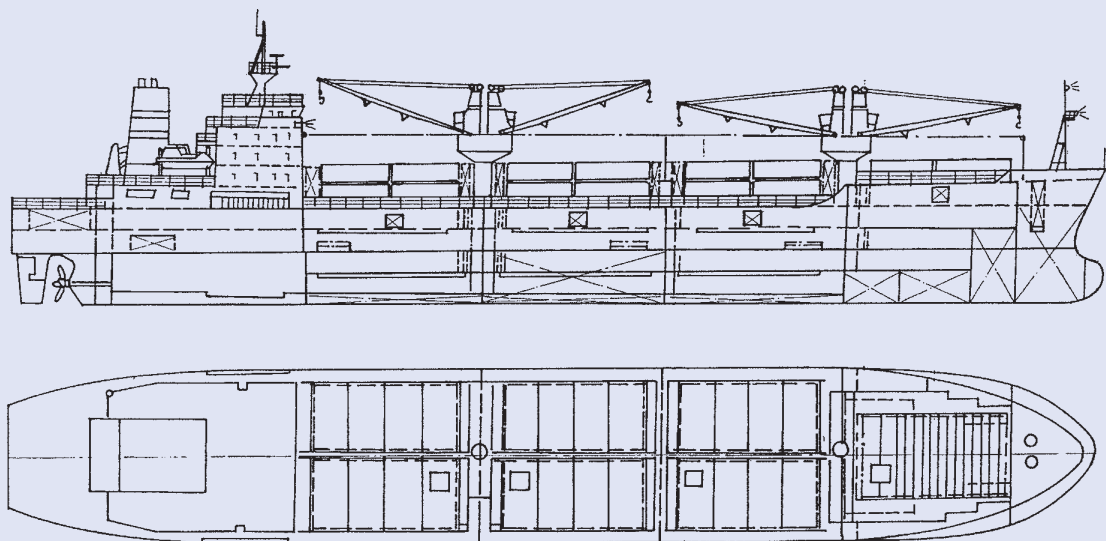
- Four diesel-generator sets, 1,280 kW, 900 rpm, 60 Hz
- One emergency generator, 96 kW, 1,080 rpm, 60 Hz

Heating plant

- One composite oil fired boiler oil fired section capacity 2.3 t/h, economizer section 1.5 t/h.

Reefer / Container Ship

430,000 CU.FT / 250 TEU



Builder / Yard No.: **Shipyard BRODOSPLIT / 363**
 Name: m/s **ATLANTIC FRIGO**
 Owner / Flag: Fresh Water Marine Inc. / Panama
 Sister ship: Yard 364
 Delivered: 1989, 1990

Single screw fast refrigerated vessel for world trade suitable for transport of frozen meat, fish, bananas, other tropical fruit cargoes and containers as well.
 The vessel has four (4) continuous decks and forecastle.

Classification: LRS; ∇ 100 A1, ∇ LMC ∇ RMC (-28°C), UMS, HR; ∇ 100 A1-1-HL-At ∇ M1-AUT1 R +.

Length over all	143.00 m
Length btw perp.	136.00 m
Breadth moulded	22.50 m
Depth moulded-main deck	13.20 m
Draught, design / scantling	7.20/9.15 m
Corresponding deadweight	6,160/11,000 tons
Gross tonnage	abt. 10,370

Main engine: BRODOSPLIT-MAN-B&W 6L60MC
 SMCR 8,340 kW/117 rpm
 Trial speed at 85% MCR and draft of 7.2 m 19.5 knots

Capacities

Cargo holds	12,000 m ³
Containers, total	250 TEU
Flooring useful area	5,250 m ²

Provisions

Heavy fuel oil	1,320 m ³
Diesel fuel oil	55 m ³
Lubrication oil	80 m ³
Fresh/feed water	210 m ³

Ballast water tanks:	1,860 m ³
Cruising range at 85% MCR	20,000 n.m
M.E. daily fuel oil consumption	27.5 tons
Crew complement	28

Cargo hatch covers and handling equipment

The hatch covers on weather deck are of folding hydraulically driven type except in way of hold No. 1 which is of vertical stacking hydraulically driven type.

Banana hatch 2.5 x 2.5 m also provided. Loading of covers 1,75 t/ m² and / or two tiers of TEU/FEU containers (3 tiers height with empty containers except in way of No. 1).

The tweendeck hatch covers suitable for this type of vessel and provided with banana hatches. The covers are of electric sliding or stacking type.

Four (4) side loading doors provided on port side.

Two twin electro-hydraulic cranes 2x160 kN SWL

The cranes in twin operations have 320 kN SWL

Cargo refrigerating plant

The cargo refrigerating plant designed for Freon 22 direct expansion employing individual cooler/fan assemblies in the fan level for each hold. The machinery to have ample capacity for maintaining the lowest temperature of -28°C in all spaces, or higher temperature for fruit chilled goods up to +12.5°C during tropical conditions at an ambient temperature of 40°C and sea water temperature of 32°C.

Ductless air circulation system is provided with an air flow in ship's longitudinal direction.

The installation consists of 4 screw compressor units fully automatic.

Steam plant

- One oil fired boiler of 1.7 t/h at 6 bar.
- One exh. gas economizer of 1.3 t/h at 6 bar.

Auxiliary engines plant

- Four el. gen. sets, 60 cycles, 780 kW D.M. driven each.
- One emergency diesel generator 100 kW, 60 cycles.