

# PASSENGER CRUISE SHIP

52 passenger

M/V - ATHENA  
M/V - ARTEMIS  
M/V - ARETHUSA





**MAIN CHARACTERISTICS**

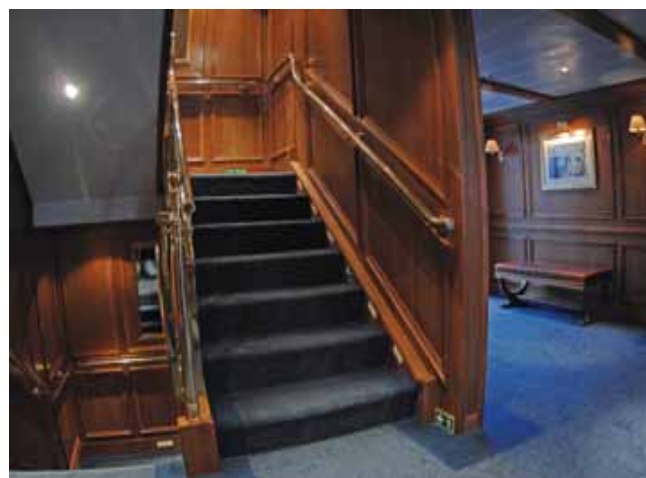
Length, over all	59,60 m
Breadth	10,68 m
Depth	4,50 m
Draught	3,00 m
Gross tonnage	1,206 GT

**Accommodation**

Passengers	52
Crew	21

**Buyer**

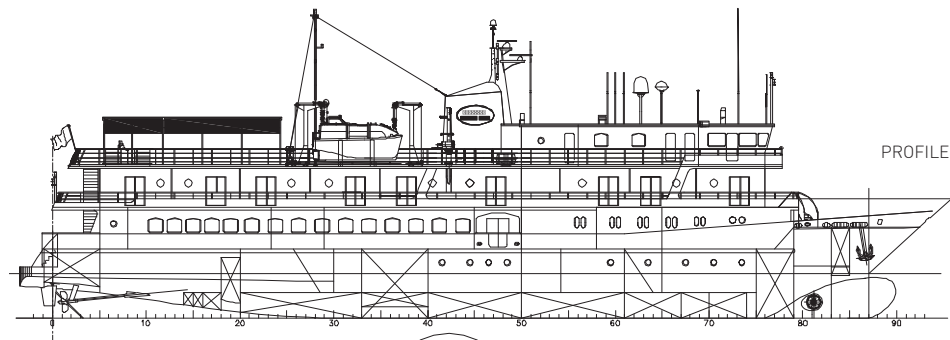
GRAND CIRCLE RIVER  
CRUISE LINE, Boston, USA



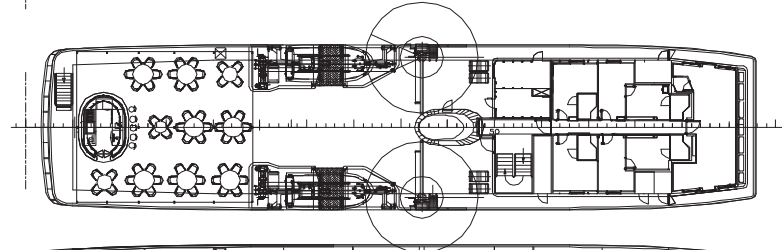
Luxury cruise ship is designed to carry 52 passengers for cruise in navigation area 2 and is built according to the Rules of Croatian Register of Shipping (CRS) for passenger ships.

Highclass passenger accommodations include 24 two-bed cabins (18 of them with balcony) for 48 passengers, as well as 4 one-bed cabins for 4 passengers. Passenger service areas include dining room and lounge with bar, external bar, gym and aft water entry platform.

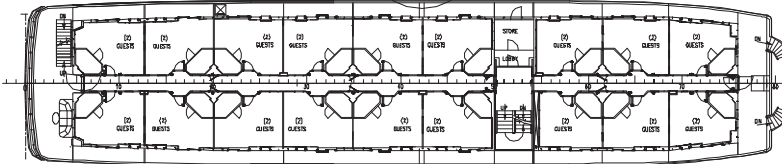
# PASSENGER CRUISE SHIP 52 passenger



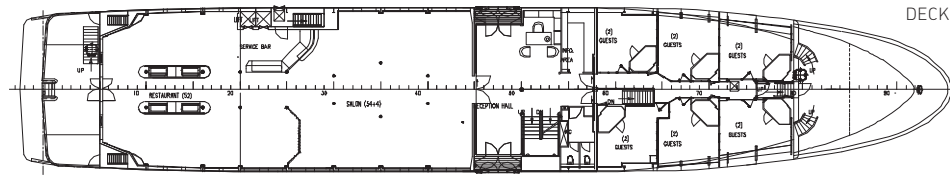
PROFILE



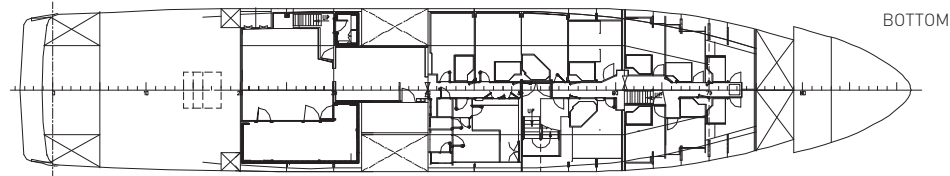
SUN  
DECK



CABIN  
DECK

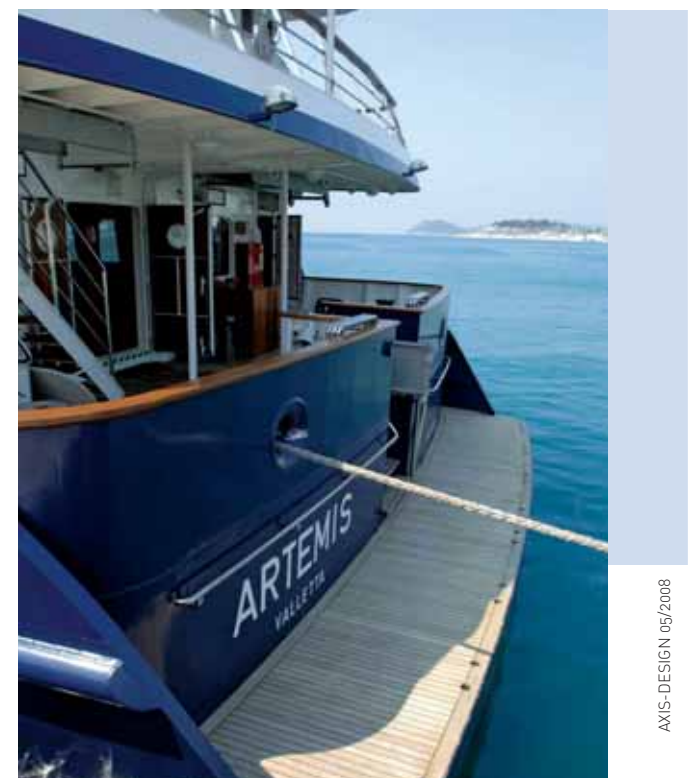


MAIN  
DECK



BOTTOM





**BRODOSPLIT - BRODOGRADILIŠTE SPECIJALNIH OBJEKATA d.o.o.**  
**BRODOSPLIT - BSO / NAVAL AND SPECIAL VESSEL SHIPYARD Ltd.**  
Put Supavla 21, 21001 SPLIT, Croatia

Phone: +385 (0)21 382 784, 391 173

Fax: +385 (0)21 382 409

E-mail: brodosplit-bso@bso.brodosplit.hr [www.brodosplit-bso.hr](http://www.brodosplit-bso.hr)

