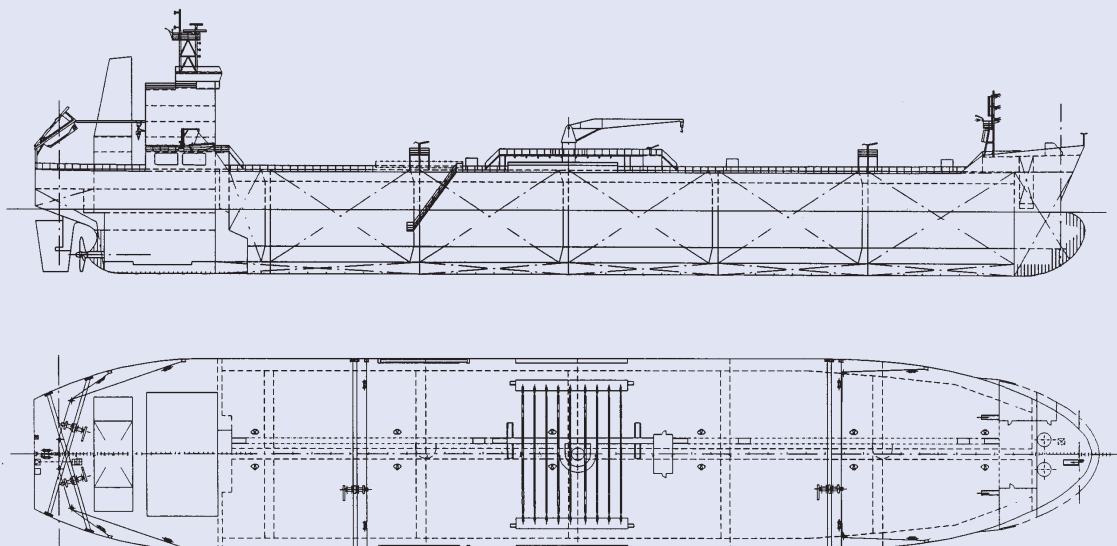


Handy Size Oil Product Tanker

45,000 DWT



Builder / Yard No.: **Shipyard BRODOSPLIT / 406**
 Name: **m/s MARINOULA**
 Owner / Flag: **Southseas Shipping Ltd. / Malta**
 Sister vessel: **Yard 407**
 Designed by: **Shipyard Brodosplit**
 Delivered: **2000**

Single screw diesel engine driven Oil Tanker with longitudinal bulkhead, bulbous bow, transom stern and forecastle. Living quarters including navigation bridge, engine room with fuel oil tanks on both sides and pump room located aft. Double bottom / double side tanks and peak tanks intended for segregated ballast. Cargo space divided into ten (10) cargo and two (2) slop tanks. Structural steel and profiles made of mild steel.

- Intended cargoes: oil products.
Four (4) grades of cargo can be handled simultaneously.

Classification: **LR ∇ 100 A1 Oil and Chemical Tanker, Ship type 3 (double hull), NAV1, LMC, UMS, IGS, ESP, COW, IWS, SCM**

Length over all	182.40 m
Length btw perp.	174.00 m
Breadth moulded	32.20 m
Depth moulded	17.60 m
Draught design	11.00 m
Draught scantling	12.00 m
Deadweight at des. draught	40,000 t
Deadweight at scant. draught	45,000 t

Main engine: **BRODOSPLIT-MAN-B&W 6S50MC**
 SMCR: **7,720 kW / 127 rpm**
 Trial speed at 90% SMCR, on design draught **15.3 knots**

Capacities

Cargo + slop tanks	53,000 m ³
Segregated ballast tanks	20,158 m ³

Provisions:

Heavy fuel oil	1,826 m ³
Diesel fuel oil	130 m ³
Fresh water	200 m ³

Main engine consumption	31.8 t/day
Cruising range	18,000 nm
Crew complement	28

Painting

Cargo tanks - Epoxy
 Ballast tanks - Light colour CT epoxy
 Under water hull - Epoxy + vinyl tar + SPC
 Deck and exposed superstr.- Epoxy + polyurethan

Cargo equipment

- Cargo pumps: 4 x 1100 m³/h at 120 mIC, s.g. 0.96, 1 cSt, steam turbine driven.
- Stripping 1 x 100 m³/h at 120 m el. driven cargo pump + 1 x 200 m³/h at 20 m eductor.
- Cargo manifolds: 4 x 300 mm

Auxiliary engines plant

- Three diesel-generator sets, 740 kW, 720 rpm, 60 Hz
- One emergency generator, 96 kW, 1800 rpm, 60 Hz

Heating plant

- Two oil fired boiler capacity 16.0 t/h.
- One composite oil fired boiler, oil fired section capacity 1.5 t/h, economizer capacity 1.4t/h.