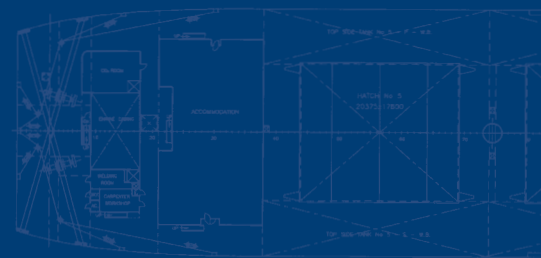
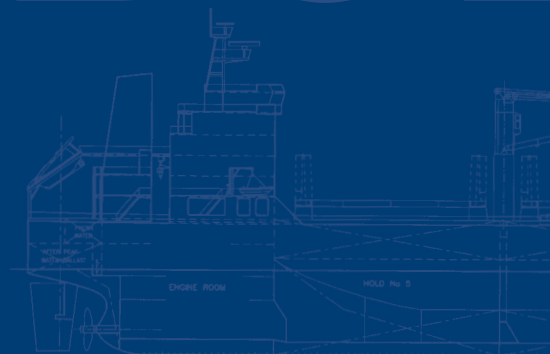


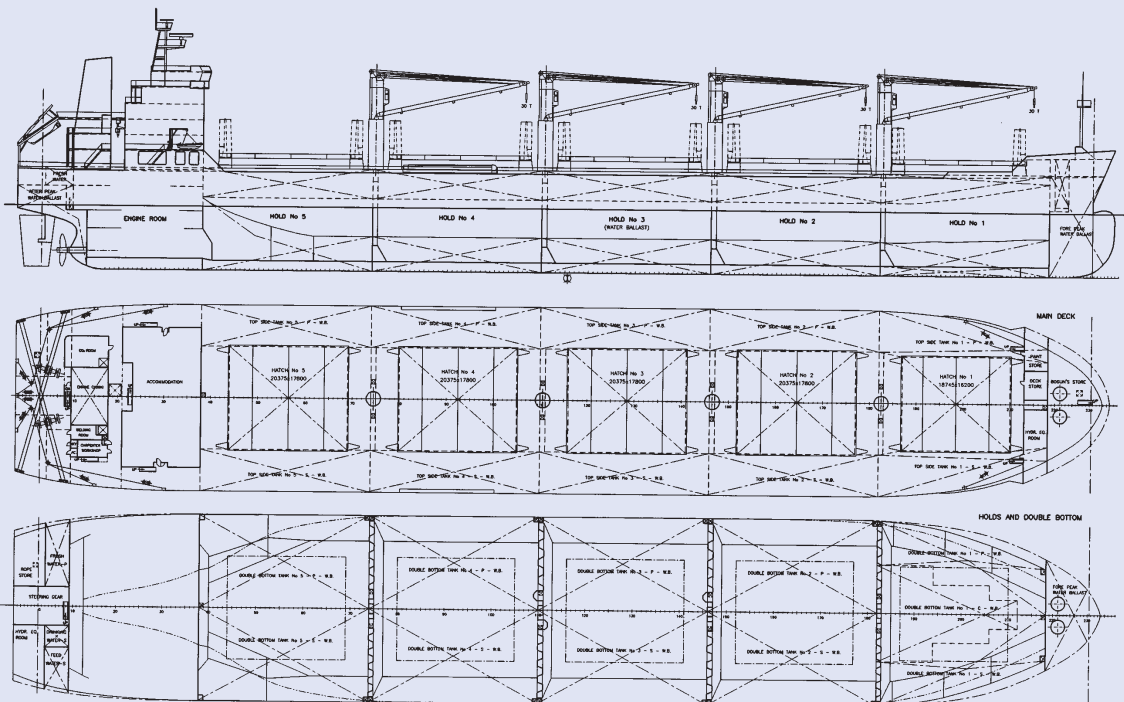
Obo & Bulk Carriers

OBO & BULK



Handymax Bulk Carrier

51,000 DWT



Builder / Yard No.: **Shipyard BRODOSPLIT / 422**
 Name: m/s **EQUINOX VOYAGER**
 Owner / Flag: Equinox Voyager Ltd / Cayman Islands
 Sister vessels: 421, 423
 Designed by: Shipyard Brodosplit
 Delivered: 2002, 2003

Single screw diesel engine driven Bulk Carrier with bulbous bow transom stern and forecastle. Living quarters including navigation bridge, engine room with fuel oil tanks on both sides located aft. Double bottom / top side tanks and peak tanks intended for segregated ballast. Cargo space divided into five (5) cargo holds. Hull structure made of mild and higher tensile steel.

Classification: American Bureau of Shipping
 ⚡1A1 (E) Bulk Carrier, SH, ⚡AMS, ⚡ACCU,
 ESP, STRENGTHENED FOR THE CARRIAGE
 OF HEAVY CARGOES - HOLD N°2 AND N°4
 MY BE EMPTY, RES, GRAB (30 tons), UWILD

Main dimensions

Lenght over all	189.99 m
Length between perpendiculars	182.00 m
Breadth moulded	32.24 m
Depth moulded	17.00 m
Design draught	11.00 m
Scantling draught	11.99 m
Deadweight at design draught	45,500 t
Deadweight at summer draught	50,568 t
Main engine Split-MAN-B&W	6S50MC
Selected maximum continuous rating	8,580 kW/127 rpm
Trial speed at design draught and 90% SMCR	15.0 kn
Main engine daily fuel oil consumption	29.3 t/day
Cruising range	20,000 nm
Crew complement	25

Capacities (100%)

Cargo holds	64,935 m ³
Ballast tanks	16,970 m ³
Heavy fuel oil	2,120 m ³
Diesel	299 m ³
Fresh drinking and feed water	265 m ³

Painting

Cargo holds	Epoxy (250 my)
Cargo hold No 3	Coal tar epoxy (300 my)
Under water hull and boot topping	Coal tar epoxy + SPC (250 my + 450 my)
Open deck and exposed superstructure	Epoxy (250 my)

Cargo equipment

Cargo hatches (weathertight, hydraulic folding)	20.375 m x 17.8 m
Cargo hatch No 1	18.745 m x 16.2 m
Cargo gears outreach	4 x 35 t SWL 27 m

Auxiliary engines plant

Main diesel-threalternators sets	3x 680 kW
Emergency diesel-alternator set	1 x 175 kW

Heating plant

Composite boilers 1 x 1.5/1.0 t/h saturated steam at 6 bar G